

AVAILABLE FOR LEASE

Alexis Court
340 W. Main St.
Carpentersville, IL 60110

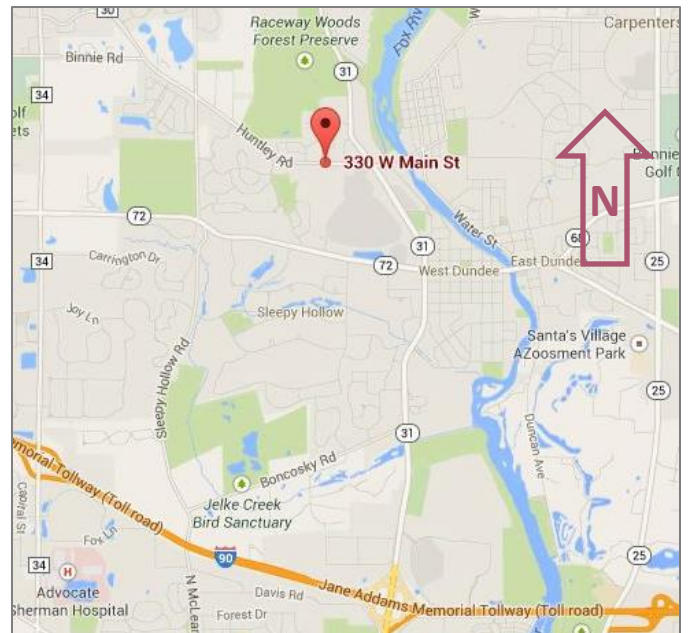


1,759 SF

RETAIL
SPACE

\$8.00 PSF NNN

- Available now in Alexis Court 1,759 SF
- End unit with signage on front and side of building
- Great visibility & location on W. Main Street (Huntley Rd.), just west of Rt. 31.
- High traffic, newer 15,000 sq. ft. neighborhood retail center, illuminated marquee sign in parkway.
- Plenty of parking, high growth area, unlimited potential!
- Professionally managed by Key Investment & Management Inc.



**KEY INVESTMENT
& Management Inc.**

Office: 630.932.5757
Fax: 630.932.5755
1263 S. Highland Ave., Suite 2W,
Lombard, IL 60148
www.key-investment.com

FOR FURTHER INFORMATION CONTACT:

Kimberly Hess

Office: 630.932.5757 Ext: 208

khess@key-investment.com

Se Habla Español

Real Estate

Brokerage

Leasing

Management

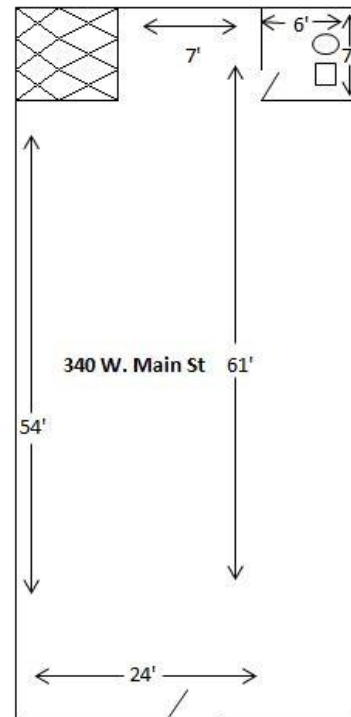
Alexis Court
 340 W. Main St.
 Carpentersville, IL 60110

1263 S. Highland Ave, Suite 2W
 Lombard, IL 60148
 Office: 630.932.5757 Ext: 208 Fax: 630.932.5755
www.key-investment.com
 Kimberly Hess
 khess@key-investment.com



AVAILABLE FOR LEASE

PROPERTY SPECIFICATIONS	
Building Size:	15,547
Available Space:	1,747 SF
Year Built:	2002
Zoning:	C2
Parking:	Open lot
Ceiling Height:	10'
Power:	100 AMP – 2 Phase
Washrooms:	1 + ADA
Sprinklered:	Yes
Utilities:	Gas/Electric
Real Estate Taxes:	\$3.79 PSF
CAM:	\$3.58 PSF
Possession:	Immediately
Lease Term:	Minimum 3 years
Lease Rate:	\$8.00 PSF NNN \$2,252.99/MO. Gross



Drawings not to scale.
 All dimensions are approximate.



Leasing

Management